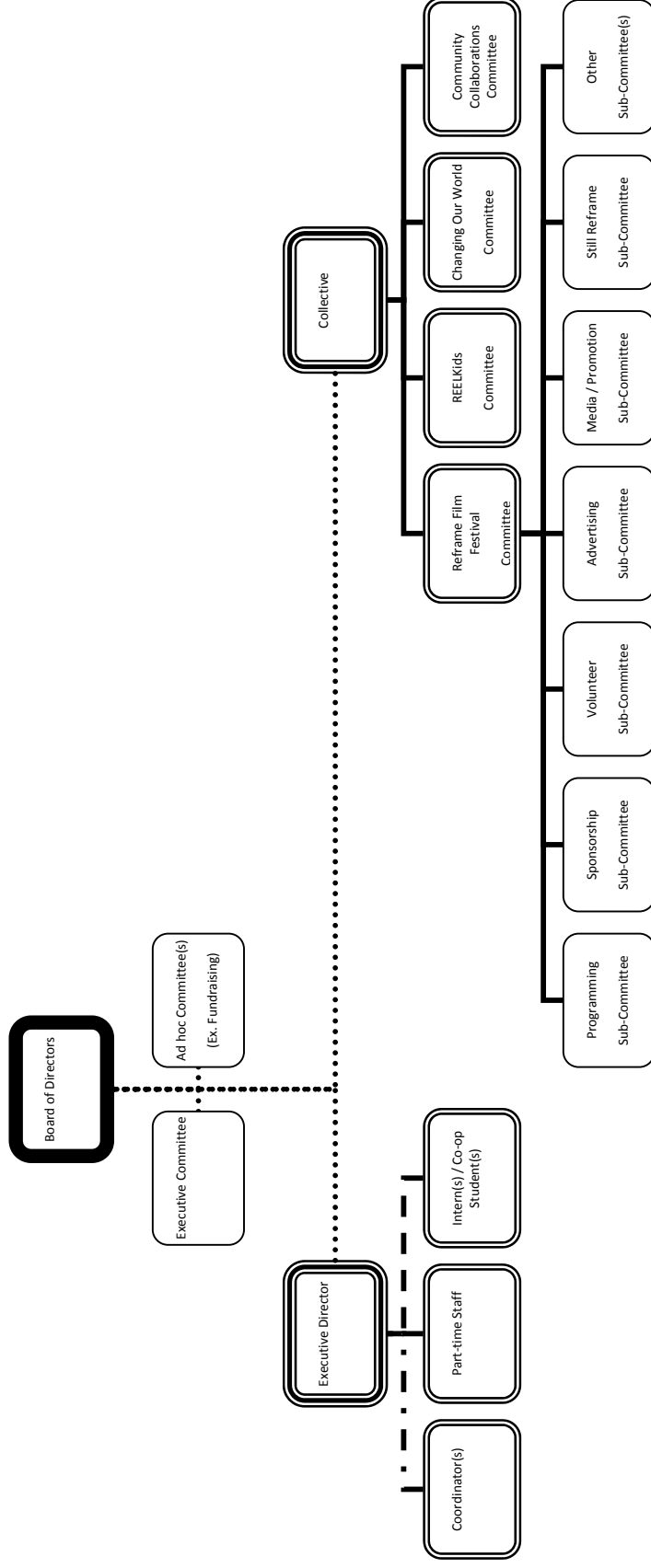


1.0 GOVERNANCE

1.1 ORGANIZATION STRUCTURE



NOTES:

1. The Board of Directors is the legal governing entity of the Reframe Peterborough International Film Festival, and its projects.
2. The BOD, Collective and ED at times provide guidance to each other and at times take direction from each other.
3. The ED reports to the BOD, is a non-voting ex-officio member of the Board, and is a member of the Collective.
4. Every staff member is a member of the Collective.
5. Part time staff, interns and co-op students have primary accountability to the ED but are also responsible to the Coordinator(s).
6. The Executive Committee is subordinate to the Board of Directors but acts on its behalf in emergency situations.