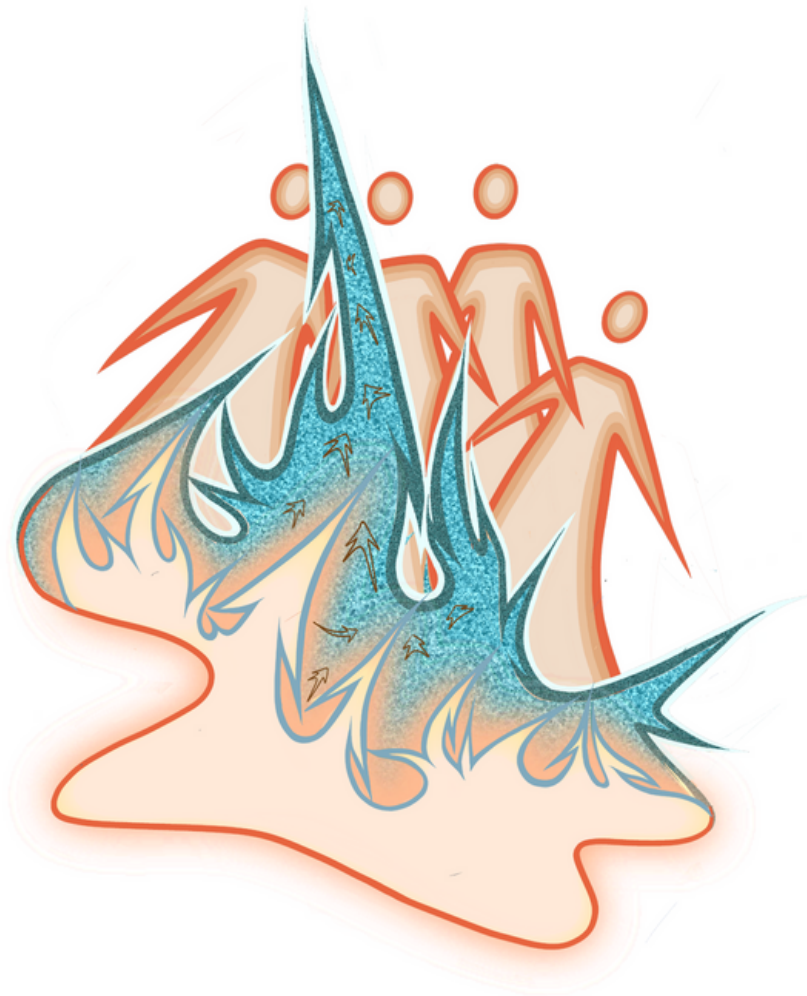
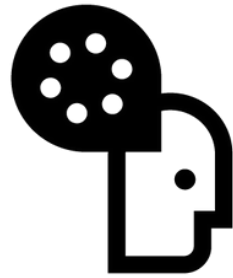
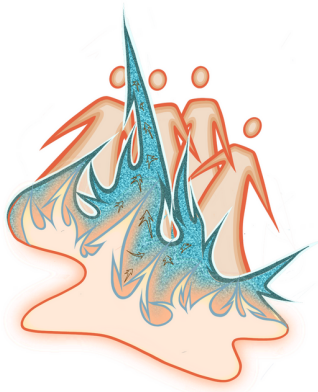




**REFRAME  
FILM  
FESTIVAL**



**2024 COMMUNITY  
PARTNERSHIP  
PACKAGE**



**REFRAME**  
**FILM**  
**FESTIVAL**

## **2024 COMMUNITY PARTNERSHIP PACKAGE**

**ReFrame Film Festival is back, celebrating its 20th anniversary!**

For the first time in three years, we're thrilled to announce the return of our celebrated in-person festival experience, running from **January 25-28 in downtown Nogojiwanong / Peterborough**. We're also pleased to be offering a full week of on-demand programs **streaming nationwide from January 29-February 4**.

Becoming a ReFrame Community Partner is a wonderful way to connect with our engaged audience (an average 15,000 viewers each year), and link your organization's great work with important and timely issues.

Since January 2005, ReFrame has been igniting the darkest time of year with illuminating documentary film and media art centred on social and environmental issues.

Please consider this an invitation for your organization to participate in the festivities as a ReFrame Community Partner!



## NEW THIS YEAR

ReFrame is offering three different partnership opportunities, with a sliding scale of price points for non-profits/community groups. Choose the right option for your budget and outreach goals.

### OPTION 1: SINGLE FILM PARTNERSHIP (1 Feature Film or Bundle of Shorts)

**Commitment range: \$100-\$500**

Benefits: Logo on pre-roll of matched film; linked listing on partners page of website; listing in printed program

### OPTION 2: FILM PACKAGE PARTNERSHIP (Package of Themed Films)

**Commitment range: \$500-\$1000**

Benefits: Logo on pre-roll of every matched film in package (average 5 films [features or bundles of shorts]); logo on film package page in printed program; linked listing on partners page of website; listing in printed program

### OPTION 3: FEATURED EVENT PARTNERSHIP (Opening Night, Friday Feature, Saturday Feature, or Closing Night)

**Commitment range: \$1000-\$2000 *\*limited availability***

Benefits: guaranteed wider reach/larger audience; logo on single pre-roll slide as "event sponsor;" live acknowledgement from stage as event sponsor; tags on social media for event coverage and recognition in event media coverage; listing on partners page of website; listing in printed program

### PLEASE NOTE:

**TWO FESTIVAL PARTNERSHIPS** are available for leading sponsorship of ReFrame 2024 as a whole. If you are interested in a tailored Festival Partnership with expanded benefits, please contact ReFrame Executive Director Kait Dueck at [info@reframefilmfestival.ca](mailto:info@reframefilmfestival.ca).

*We also welcome creative collaborations without monetary contribution. It is an essential part of our mandate to link the issues on screen with action in the community, and we will continue to reach out to our partners to engage audiences with critical justice work being done in Nogojiwanong. If you have a great idea for a collaboration on an important issue, please contact us at [info@reframefilmfestival.ca](mailto:info@reframefilmfestival.ca).*



## **BECOME A COMMUNITY PARTNER IN 3 SIMPLE STEPS:**

**1** Consider which of the following film categories best fits your organizational mandate:

Education, Science and Technology; Environment and Climate Change; Feminist Issues; Health, Mental Health and Ability; Indigenous Rights; International Human Rights; LGBTQ2SIA+ Rights; Local and Regional; Youth and Aging

**2** Choose a partnership level that best meets your budget and outreach goals: single film, film package or featured event.

**3** Let us know your film category preferences, and any relevant information about your organization that will assist us in making the best selections for you by filling out the [2024 Community Partnership Form](#).

### **PLEASE NOTE:**

E-transfers can be made to [partners@reframefilmfestival.ca](mailto:partners@reframefilmfestival.ca); cheques to ReFrame Film Festival, Box 895 Peterborough ON, K9J 7A2

**PARTNERSHIP COMMITMENTS ARE DUE BY FRIDAY,  
DECEMBER 15TH, 2023 AT 5 P.M.**

If sponsorship isn't the best way for you to support ReFrame this year, please consider a [tax-deductible donation](#); gifts of \$20 or more are eligible for a charitable receipt.

